



## **JP0223**

### **FEATURE HIGHLIGHTS**

- ☞ Effortless sliding operation with large rollers assembly on a stainless steel track
- ☞ Strong 15x40mm track offers stable sliding action
- ☞ Handle with strength, durability and resistance to rust and corrosion

### **SPECIFICATIONS**

#### **Dimension(60 in. W x 76 in. H)**

- ☞ Fits 56" to 60" finished opening
- ☞ Up to 4" (102mm) in width adjustment
- ☞ Custom made is available

#### **Glass**

- ☞ 3/8 in. (10mm) thick or 5/16 in.(8mm) tempered glass
- ☞ ANSI certified tempered glass

#### **Hardware**

- ☞ Metal sliding construction
- ☞ #304 stainless steel wheel with out-of-center adjustment
- ☞ Anti-splash slim aluminum threshold to prevent water spills
- ☞ #304 stainless steel handle
- ☞ Hardware finished in Chrome, Brushed, Black



Chrome

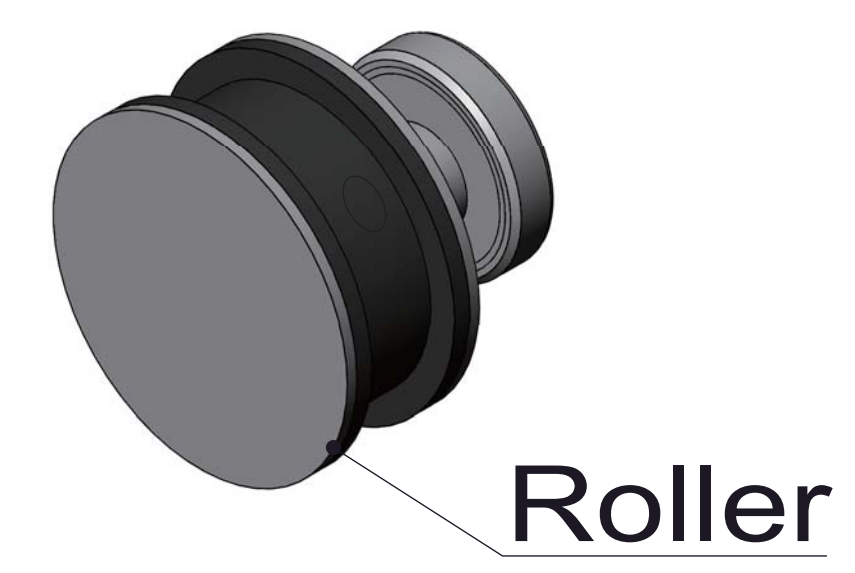


Brushed



Black

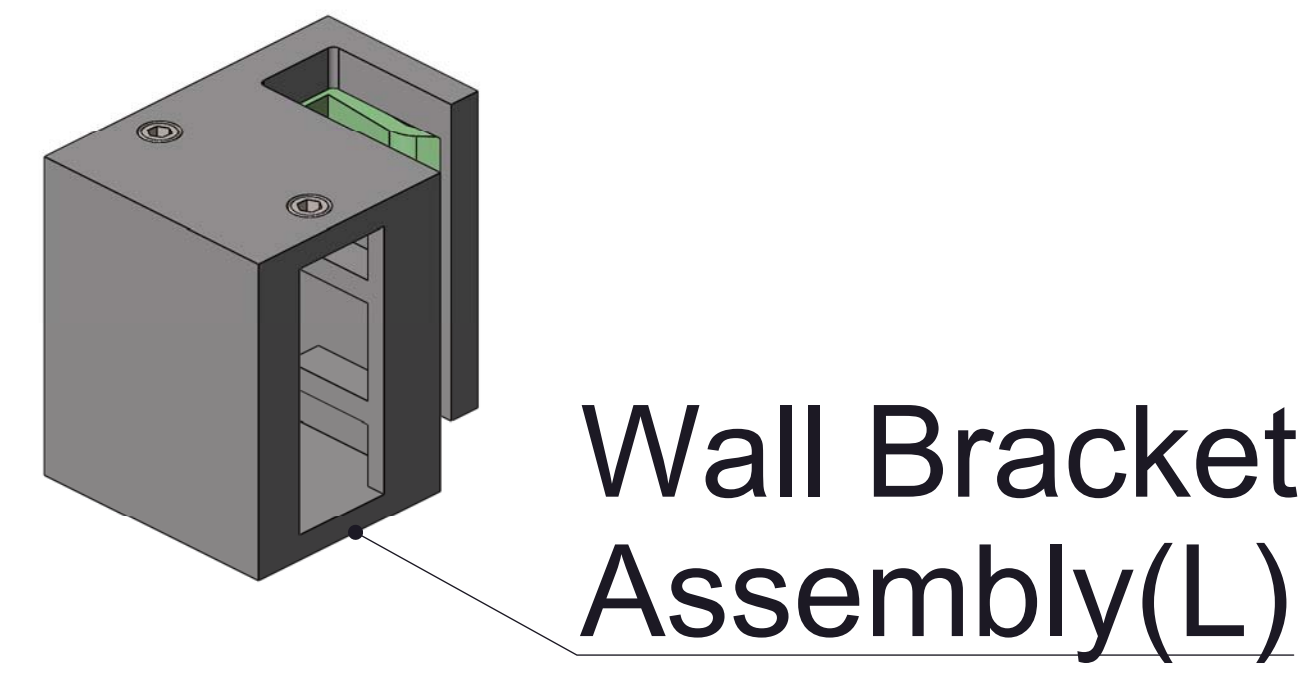




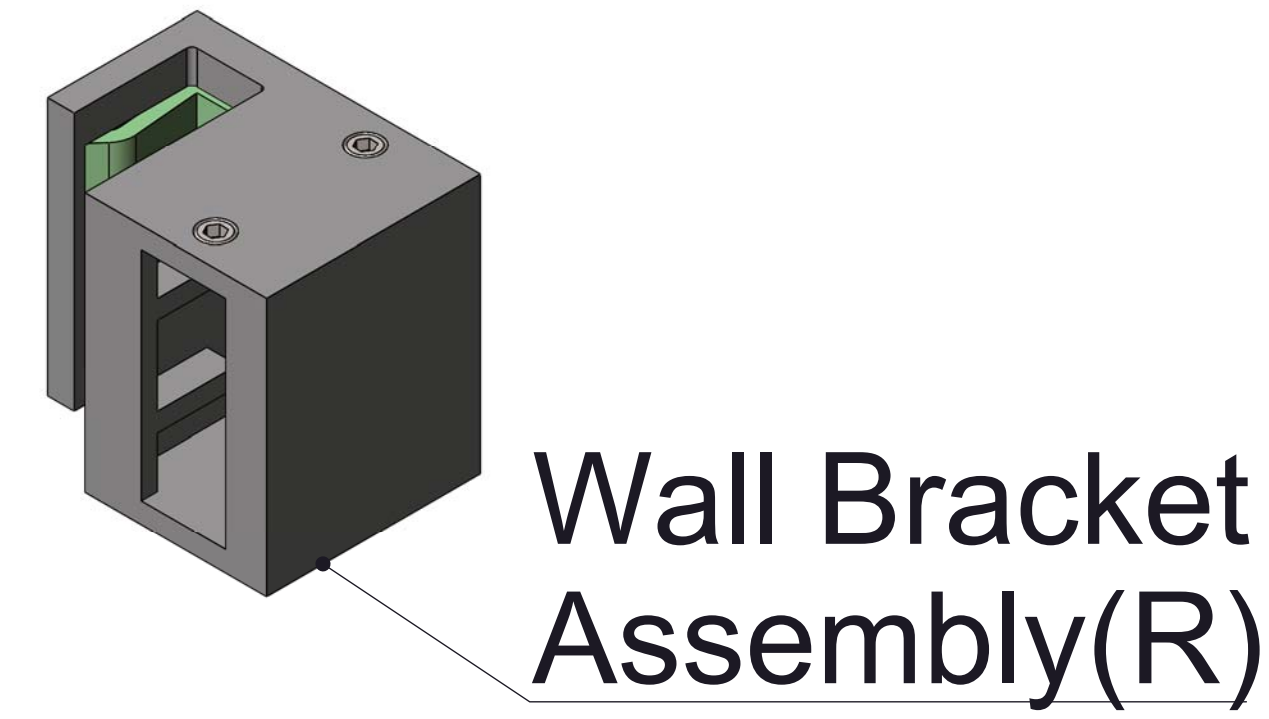
Roller



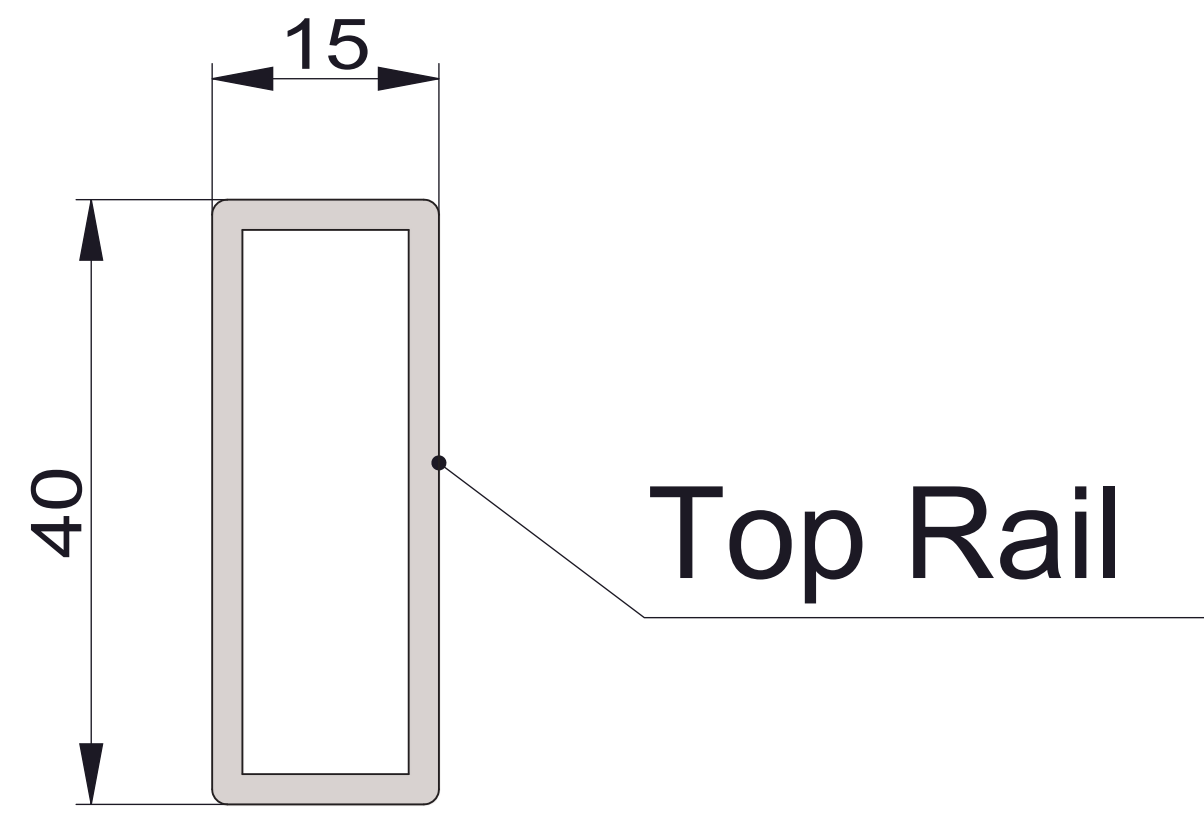
Anti-Jump Assembly



Wall Bracket Assembly(L)



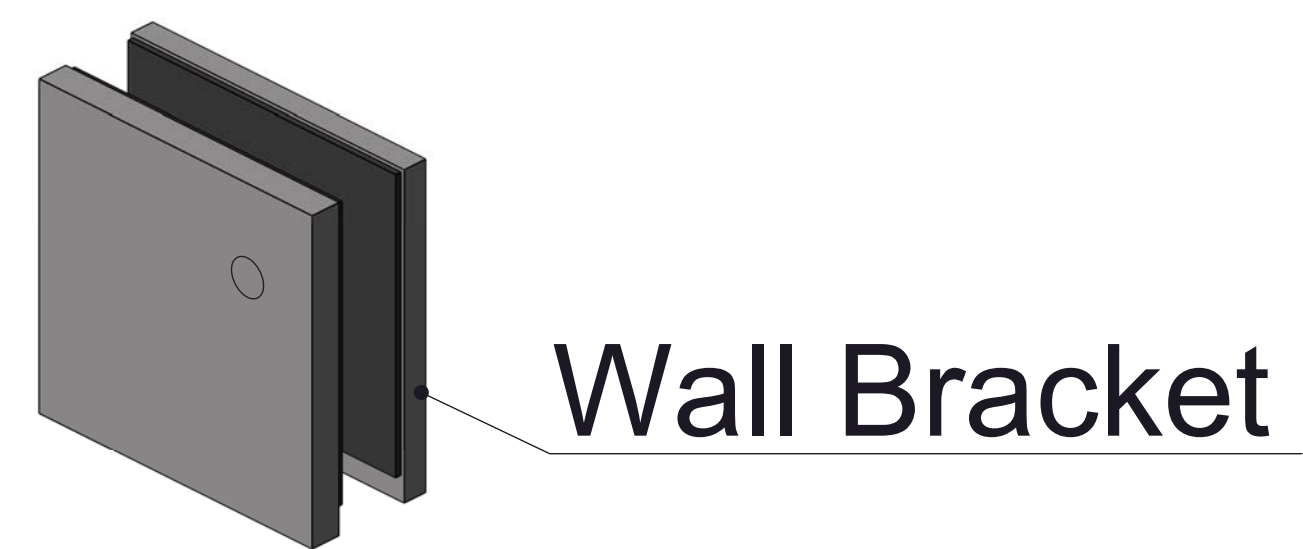
Wall Bracket Assembly(R)



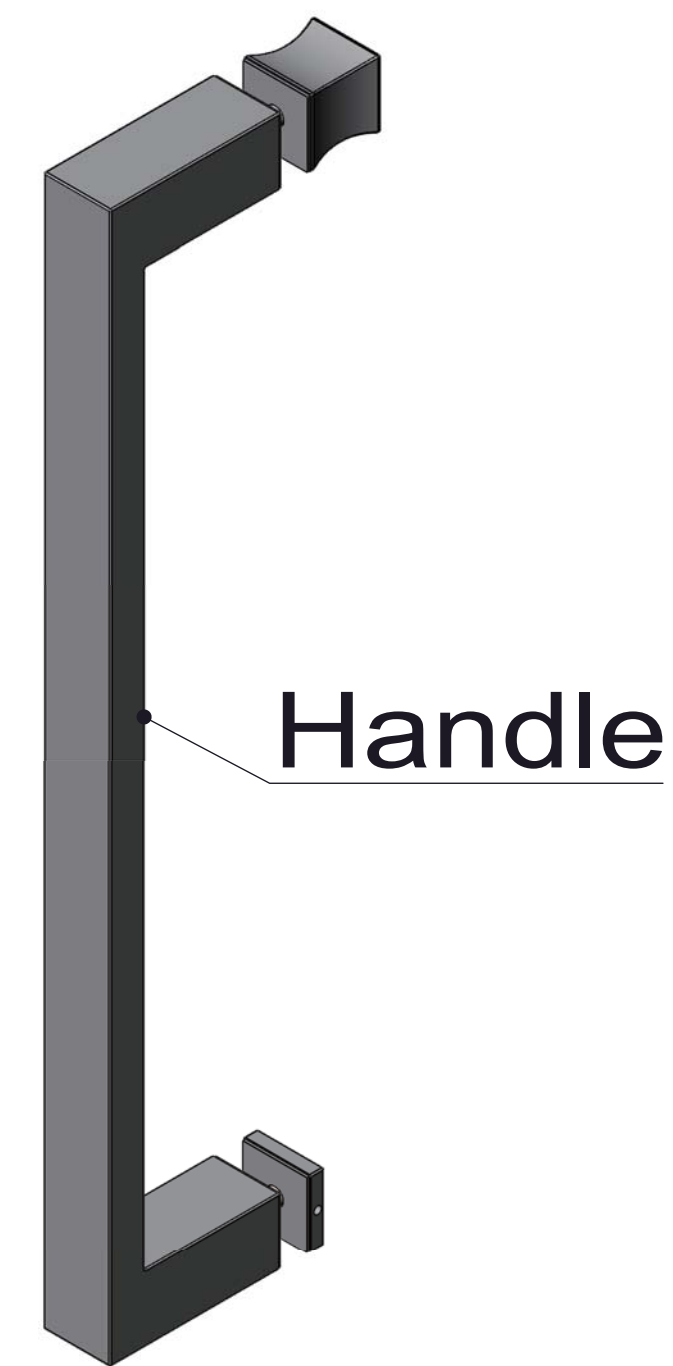
Top Rail



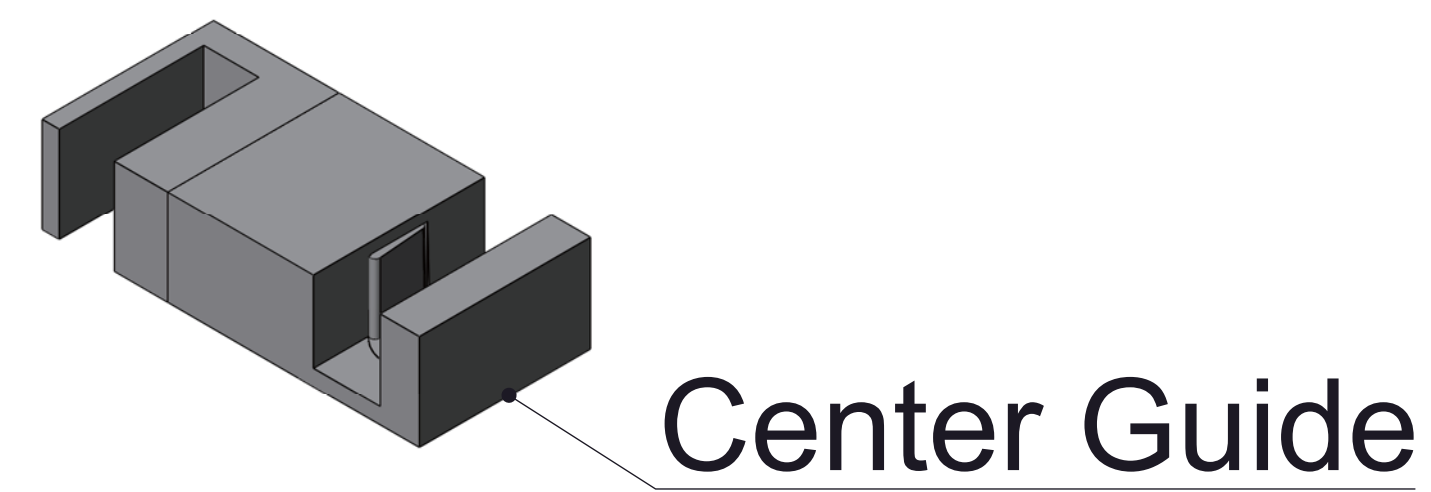
Anti Jumping Knob



Wall Bracket



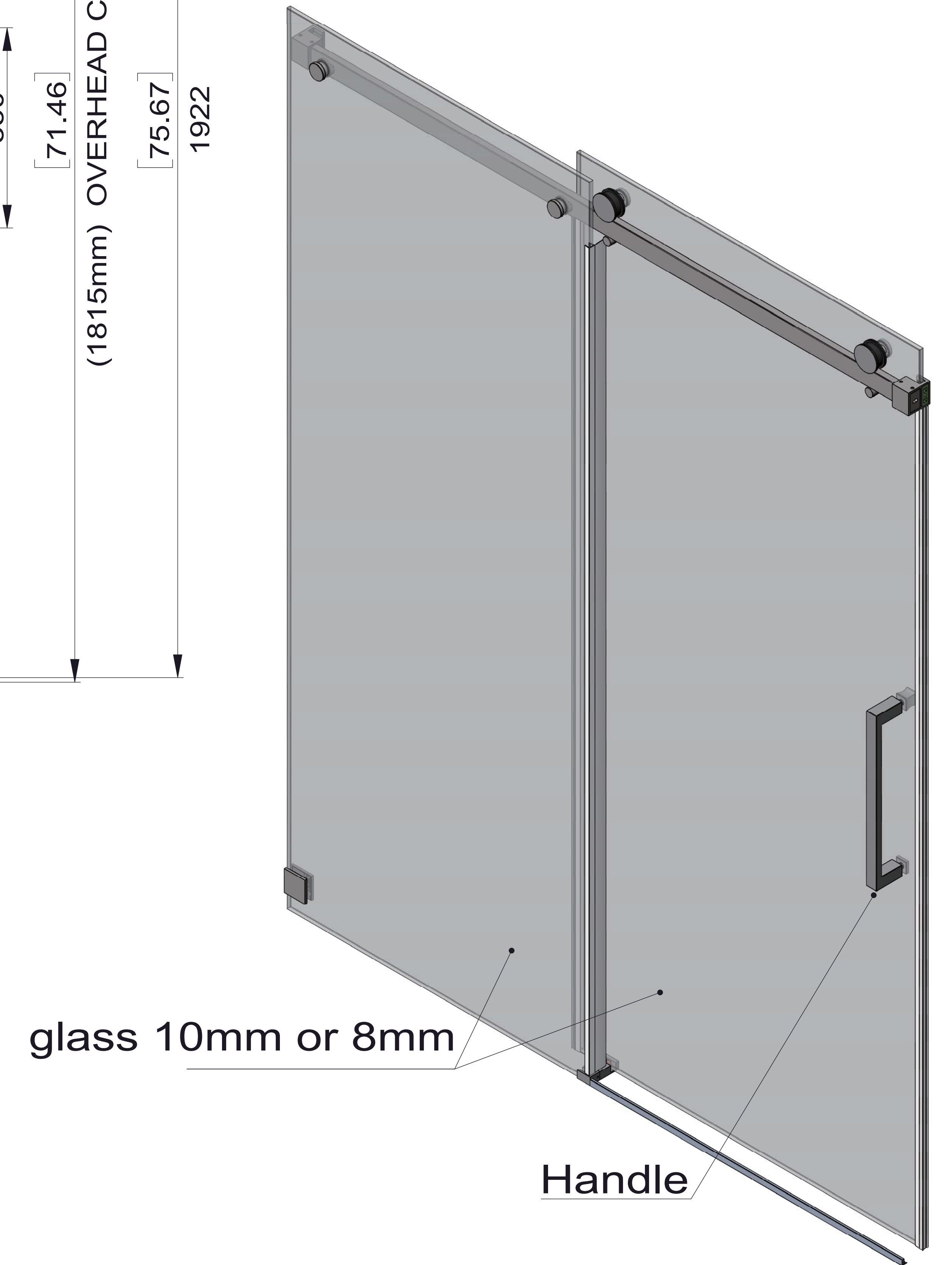
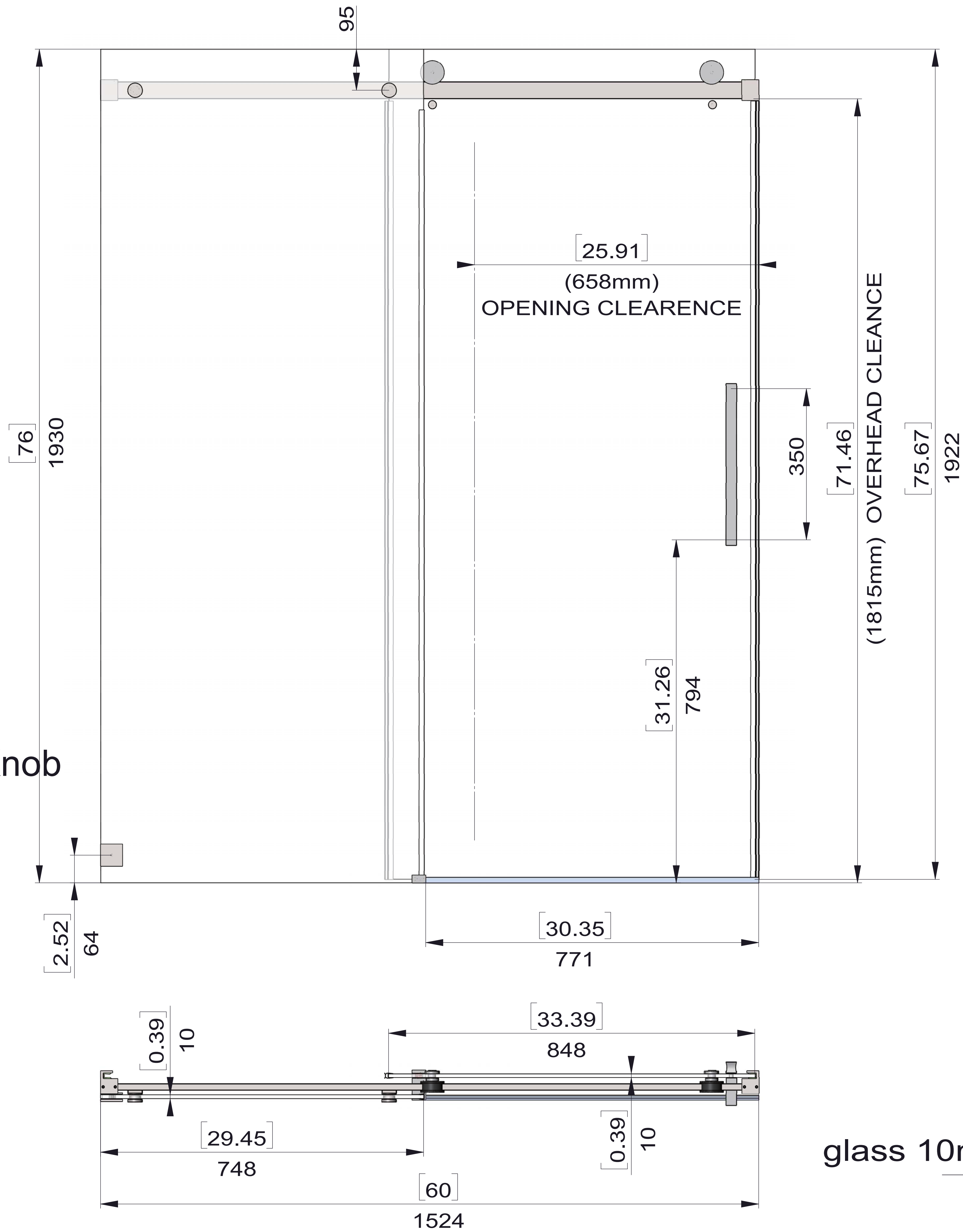
Handle



Center Guide



Anti Splash Threshold



JP0223(60"X76")